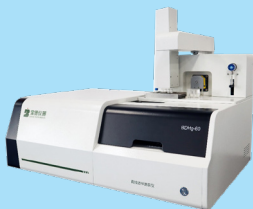


Professional Laboratory Analytical Instruments Manufacturer with Complete Solutions from Sample Preprocessing to Analytical Testing Methods.

宝德仪器作为专业的实验室分析仪器制造商
为化学分析实验室提供从样品前处理到分析测试方法的完整解决方案



Beijing Baode Instrument Co., Ltd.



Founded in 2015, **Beijing Baode Instrument Co., Ltd.** is located in Beijing, China. Baode focus on research and development, production, sales, and after-sales service of laboratory analytical instruments related to food and agricultural by-product safety testing and environmental testing. We are high-tech enterprise with ISO 9001 International Quality System, ISO 14001 environmental system and OHSAS 18001 Occupational Health and Safety Management System certification. The total number of independent intellectual property rights, patents and software copyrights is over 80.



We have researched and developed multiple products independently:

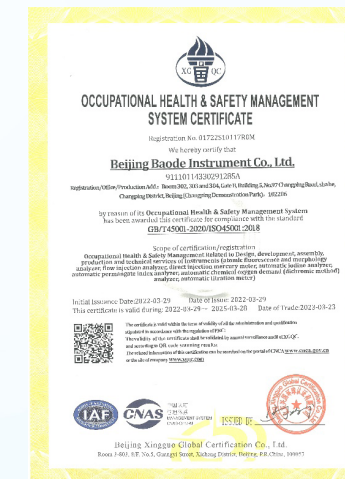
- BDFIA Series Flow Injection Analyzer
- Direct Mercury Analyzer
- Automatic Solvent Extractor
- SnCl_2 - Cold Atomic Absorption Mercury Analyzer
- BAF Series Atomic Fluorescence Spectrometer
- Automatic Iodine Analyzer
- Automatic Chemical Oxygen Demand (Dichromate method) Analyzer
- Automatic Permanganate Index Analyzer
- Automatic Potentiometric Titrator
- Total Organic Carbon Sample Pretreatment Station
- Automatic Iodine Analyzer
- Automatic Evaporator for Gross Alpha/Beta Activity Concentrations in Water
- Automatic Constant Temperature and Humidity Weighing System
- Automatic Total Dissolved Solid Analyzer
- Automatic Free Silica Analyzer
- Automatic Biochemical Oxygen Demand Analyzer

Our instruments have gained unanimous recognition and credit from our clients. Among them, BAF-4000 Atomic Fluorescence Spectrometer won BCEIA gold award in 2017. BDFIA-8600 won BCEIA gold award in 2019.



Our users are widely distributed in laboratories in various fields such as **environmental protection, quality inspection, disease control, medicine, food, agriculture, geology, tap water, research institutes, University and third-party testing institutions** in both China and abroad.

In order to better promote enterprise development and integrate into the international market, we pass a series of international certifications.



BDFIA-8600 Flow Injection Analyzer



Measurement items

Volatile phenol, Cyanide, Total cyanide, Total phosphorus, Total nitrogen, Soluble sulfide, Nitrate, Nitrite, Permanganate index, Ammonia nitrogen, Silicate, Anionic, Soluble boride, Surfactant, Orthophosphate, Hexavalent chromium, Fluoride, Urea, Total Alkalinity, Total Hardness, Acidity, Chroma, Calcium, Magnesium, Formaldehyde etc.

Application areas

- Water quality analysis (drinking water, public sewage, industrial wastewater, surface water, ground water, waste water, etc.)
- Environmental analysis (soil analysis, plant analysis)
- Food and beverage analysis
- Fertilizer analysis

Technical Index

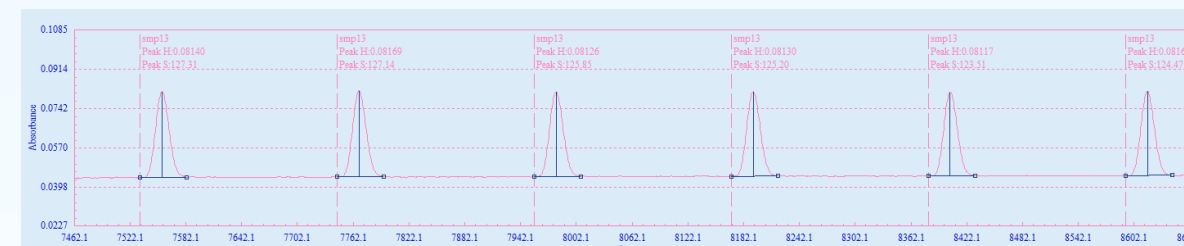
- Multiple testing items are analyzed quickly and accurately at the same time. Measure

Product Introduction

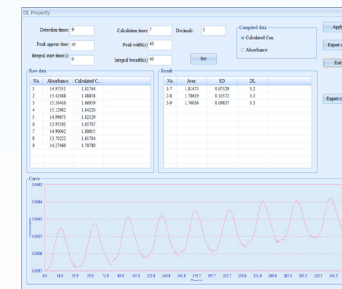
BDFIA-8600 can work automatically including sampling, sample online preprocessing, chemical reaction, detection, data report, etc.

immediately after powering on, and the stabilization time is less than 10 minutes.

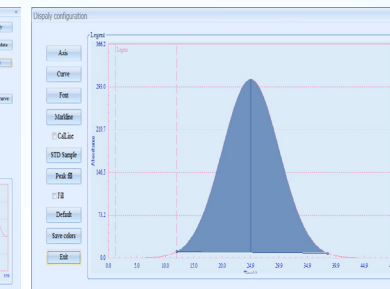
- Integral design, sampling, reaction and detection parts are all in one instrument. With online degassing function, no need to degas the reagents.
- 72 auto-sampler is used in each channel. It can also be connected to other specifications of automatic samplers at any time.
- High-sensitivity and dual-beam detector with low detection limit and good repeatability and Excellent stability.
- One 12-port non-adjustable peristaltic pump.
- Multiple channels can be analyzed at the same time, supporting up to 16 channels for simultaneous analysis. Each channel is equipped with an independent detector and can also be used as an independent analytical instrument.
- Compliance with ISO standards.



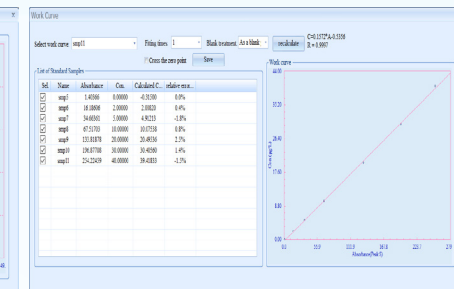
RSD



Detection Limit



DISPLAY CONFIGURATION



Work Curve

Instrument Performance Index

1 Indicators of Ammonia Nitrogen

- 1.1 Method: Salicylic Acid Photometer
- 1.2 Linearity: 0.01-5mg/L
- 1.3 DL: ≤ 0.005 mg/L
- 1.4 Frequency: 50 PCS/Hour
- 1.5 RSD: $\leq 1\%$ (0.2mg/L)
- 1.6 Accuracy: $\pm 3\%$

2 Indicators of Volatile Phenol

- 2.1 Method: 4-Amino-antipyrine Photometer
- 2.2 Linearity: 0.001-0.2mg/L
- 2.3 DL: ≤ 0.0003 mg/L
- 2.4 Frequency: 20 PCS/Hour
- 2.5 RSD: $\leq 1\%$
- 2.6 Accuracy: $\pm 3\%$

3 Indicators of Cyanide

- 3.1 Method: Isonicotinic acid-barbituric acid photometry
- 3.2 Linearity: 0.001-0.2mg/L
- 3.3 DL: ≤ 0.0005 mg/L

3.4 Frequency: 20PCS/Hour

3.5 RSD: $\leq 1\%$

3.6 Accuracy: $\pm 3\%$

4 Indicators of Anionic Surfactants

4.1 Method: Methylene Blue Photometry

4.2 Linearity: 0.02-2mg/L

4.3 DL: ≤ 0.010 mg/L

4.4 Frequency: 20 PCS/Hour

4.5 RSD: $\leq 2\%$

4.6 Accuracy: $\pm 3\%$

5 Indicators of Sulfide

5.1 Method: Methylene Blue Photometry

5.2 Linearity: 0.01-1.0mg/L

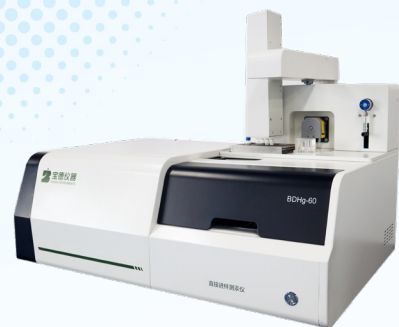
5.3 DL: ≤ 0.005 mg/L

5.4 Frequency: 15 PCS/Hour

5.5 RSD: $\leq 3\%$

5.6 Accuracy: $\pm 3\%$

BDHg-60 Direct Mercury Analyzer



Introduction

BDHg-60 Direct Mercury Analyzer is based on the principle of ETV-AAS. The instrument does not require the addition of any reagents and does not require complex sample pretreatment. It can directly determine the total mercury content in solid and liquid samples. BDHg-60 effectively avoids mercury loss, cross contamination and environmental pollution in the process of pre-treatment. The system ensures accurate data analysis and saves time, manpower and reagents.

Application

The BDHg-60 Direct Mercury Analyzer mainly tests mercury content in Food Safety, Environmental Protection, Disease Control and Prevention, Medicine, Agriculture, Mining, Soil, Surface Water, Groundwater, Cosmetics, Scientific Research and other fields of samples.

Characteristic

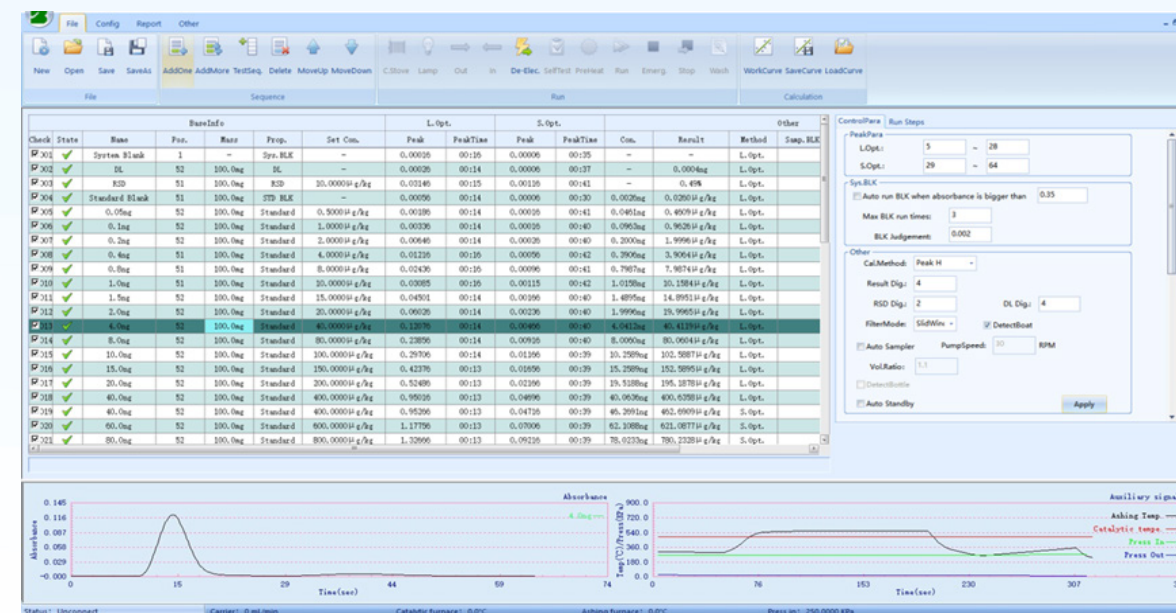
- **Easy Operation:** No need to sample digestion. The operator only needs to weigh the sample and place it on the automatic sampler.
- **High Efficiency:** A complex matrix sample was

tested in less than 5 minutes and a simple matrix sample takes less than 3 minutes. Samples can be added to the device in an infinite cycle.

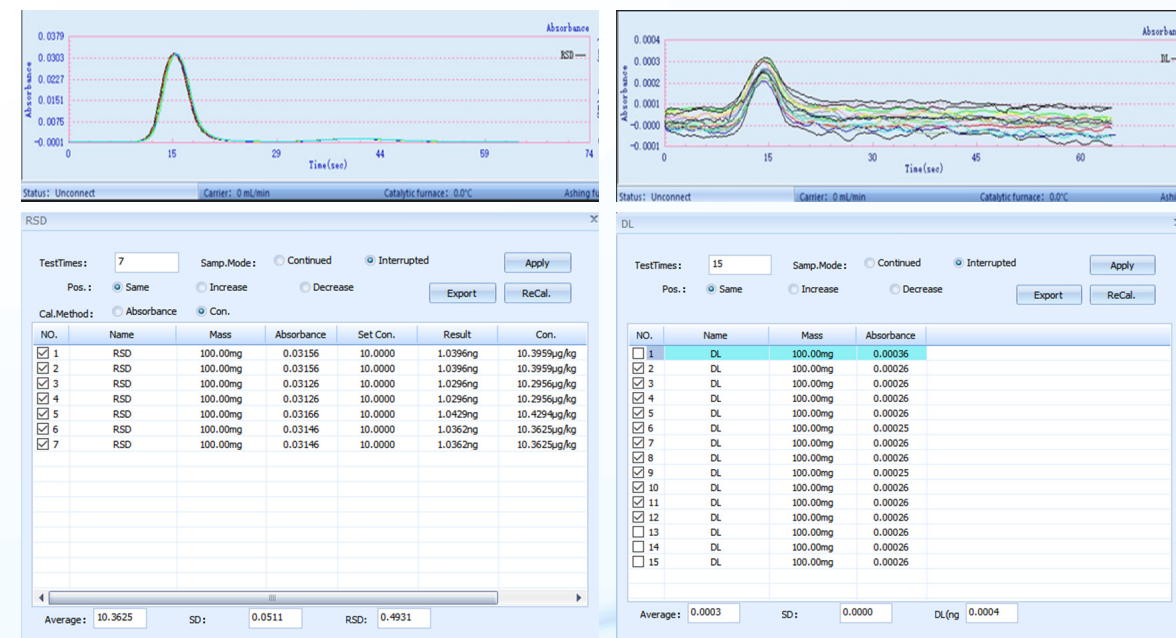
- **Excellent Repeatability and Accuracy:** The patented rapid condensing unit makes the system better for removing water, less mercury memory and better repeatability.
- **Environmentally Friendly:** No need to use toxic and harmful chemicals in the whole process of analysis
- **Intelligent platform:** The software is simple to operate and equipped with a Whole-Process temperature monitoring system and a One-Button embedded program to update the latest system.
- **Direct transfer of solid sample weight results:**
- **LAN communication interface:** Ensure the system to communicate quickly and run reliably and stably.
- Standards: EPA7473 and SN/T 4697-2016.

Main Parameter

- Quality Detection Limit: $\leq 0.0005\text{ng}$
- Repeatability: $\text{RSD} \leq 1\%$ (1ng)
- Maximum Samples: Solid for 1500 mg; Liquid for 1.5 ml
- Linearity Range: 0~2000ng
- Correlation Coefficient: $R \geq 0.999$
- Measurement Method: Peak area or peak height
- Calibration Method: Standard Solution or Reference Material
- Autosampler: Sample bits for 60 solid/liquid samples.
- Automatic Liquid Injector: Optional automatic sampler with separate 60 sample bits to prevent liquid sample volatilization.
- Detection Principle: ETV-AAS



Main Interface



RSD

Detection Limit

BDHg-60L SnCl₂ - Cold Atomic Absorption Mercury Analyzer



Working principle

All mercury contained in the sample is converted into divalent mercury after digestion, and stannous chloride is used to reduce the divalent mercury into metallic mercury. The response value is measured at a wavelength of 253.7 nm. So mercury content is proportional to the response value.

Application:

It is suitable for testing the mercury content in water, soil, biological samples, alloys and gas samples in different fields such as environment, geological and mining industries, disease prevention and control, etc.

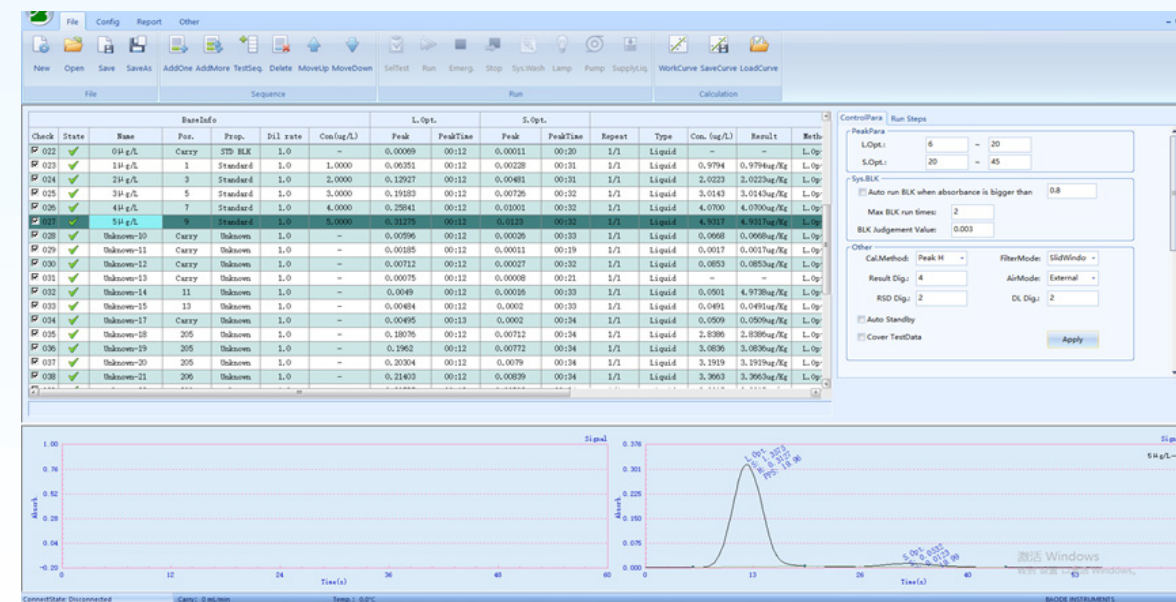
Characteristic

- A single sample test takes less than 2 minutes, special samples can be inserted or deleted at any time, and infinite loop testing is possible.
- Equipped with a selective mercury enrichment device, which improves the detection sensitivity.

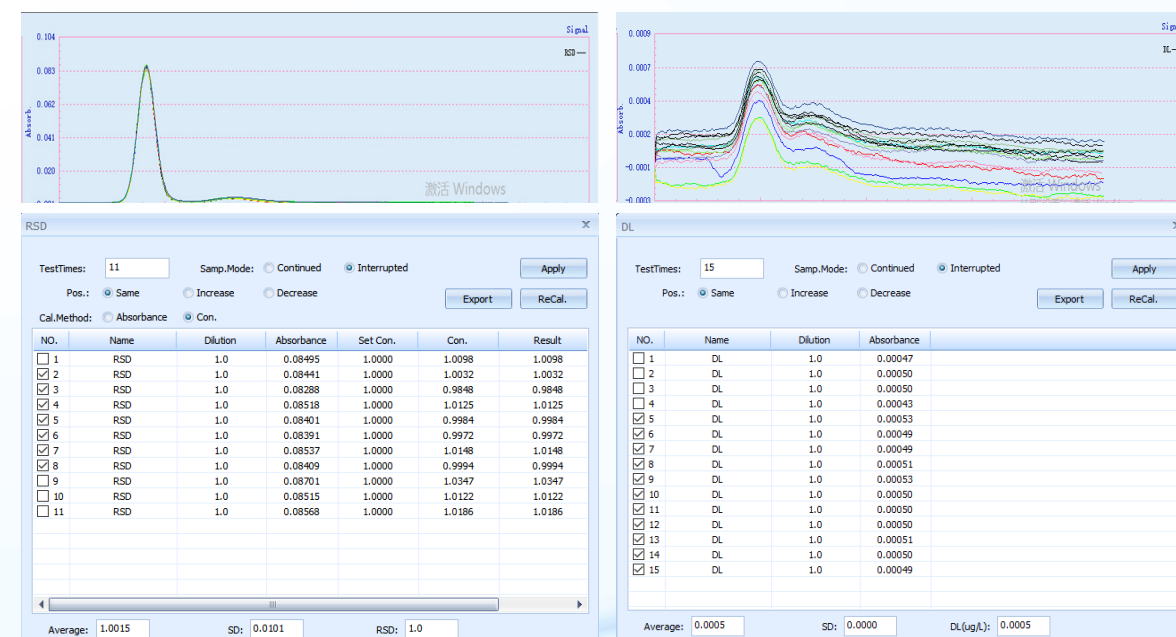
- Constant-temperature double absorption cell design, which can meet the accurate detection of low concentrations and achieve a wider measurement range.
- Multi-stage gas-liquid separation and semiconductor condensation water removal device, the system water removal effect is better and the mercury memory effect is smaller
- Software with real-time monitoring of instrument status and sample detection status; real-time online automatic integration processing of measurement data.
- It has the switching function of built-in and external gas sources to meet different laboratory requirements.
- With single-point preparation of standard curve and automatic dilution of samples beyond the linear range, the test is faster and more accurate.

Technical indicators

- 4.1 Detection limit: 0.001 μ g/L
- 4.2 Measuring range: 0 -300 μ g/L
- 4.3 Correlation coefficient $R>0.999$
- 4.4 Precision (RSD) $\leq 1\%$
- 4.5 Measurement speed < 2min/sample
- 4.6 The sampling volume is 5mL. The instrument parameters can be adjusted to meet the injection requirements of different volumes.



Main interface



RSD

Detection Limit

BASE series Automatic Solvent Extractor



BASE-26



BASE-30

Automatic Solvent Extractor is a sample pre-treatment method from solid or semi-solid samples. It meets the standard of **EPA 3545A**.

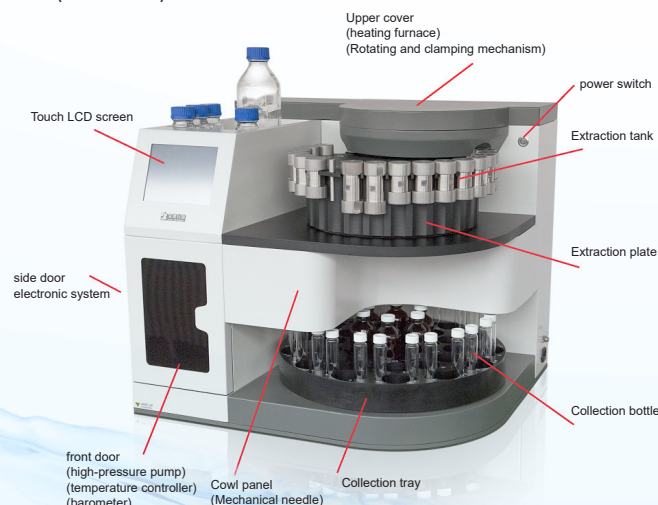
Application

Rapid extraction of target components from solid or semi-solid samples in soil, environmental, chemical, pharmaceutical, electronic products, agricultural and food products and some natural product samples.

Advantages

- Save time: Extraction time: < 20min, compared with Soxhlet and Ultrasonic extraction, save a lot of time.
- Save solvents: 11ml-100ml
- Optional: Solvent controller: automatically mix up to four solvents based on the present mixing ratio.
- High pressure: Keep the solvent in liquid state to ensure the safety of extraction process.

- Three samples can be extracted simultaneously at one time, and each round can automatically complete the extraction of up to 30 samples. (BASE-30)



Main Parameter

- Temperature: room temperature ~210°C .
- Pressure: 0-20MPa
- Volume: 1ml, 5ml, 11ml, 22ml, 33ml, 66ml, 100ml
- Extraction time: < 20min



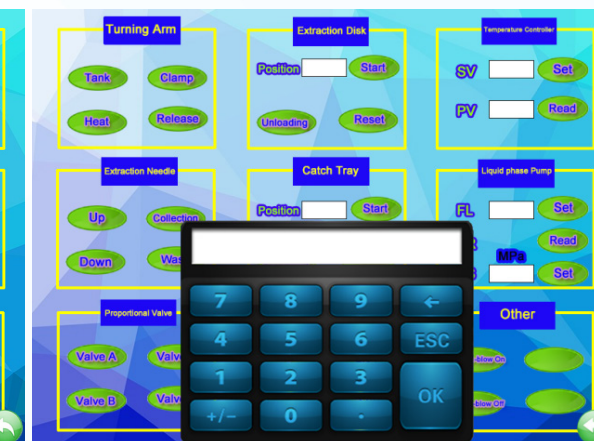
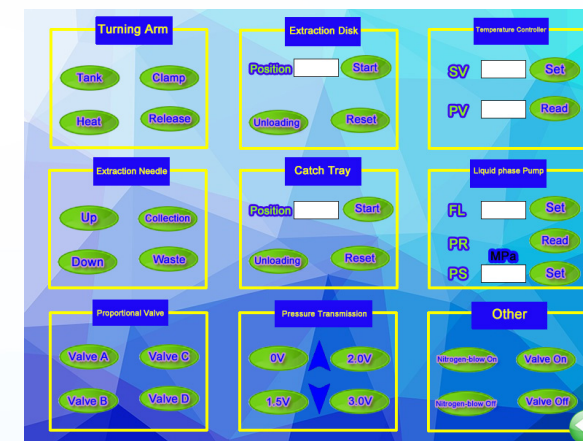
RSD



Quick Function Interface



Sample Extraction Position



Debugging Interface

Nurturing Real Talent
Driving Genuine Innovation
宝才厚德 求实创新



Beijing Baode Instrument Co., LTD
北京宝德仪器有限公司

👤 Contact : Flora Bai

📱 Mobile/ Whatsapp /Wechat: +86 18110127280

✉ E-mail: globalmarket@bjbaode.com

📍 Address: Floor 3 , Building D, NO. 97 Changping Road, Beijing, China



Website:
<https://www.bjbaode.com/en/>